

PUBLIC PARTICIPATION NETWORK

**Update for LCDC Meeting
25th May 2016**

- Update circulated 07th April 2016
- PPNs are being set up in each county under **Section 46 of the Local Government Reform Act 2014.**
- Structured Participation within Local Government
- The PPN will be organised at County and Municipal District levels.
- Main link for the local authority to connect with the **community/ voluntary, social inclusion and environmental sectors.**
- Secretariat - Selection of Representatives
- Representation onto decision making committees & bodies of local government

- Mr. Michael Kenny, Lecturer, Department of Adult & Community Education, Maynooth University
- Engaged by Kildare County Council as Facilitator
- Setting up of the Secretariat of Kildare PPN initially
- Selection of representatives onto LCDC/SPC's/JPC's
- Support the continued development of the PPN

Public Participation Network

Phase 1:

- www.kildareppn.ie
- Online registration
- Registration process – Successful (469)
- On-going registration

Phase 2:

- Engagement with PPN groups
- Secretariat – Selection of representatives (11)

Phase 3: (Autumn 2016)

- Selection process – Representatives to LCDC/SPC's/JPC's

Phase 4: (Autumn onwards)

- On-going support for PPN reps
- Training
- Development of roles
- Active participation

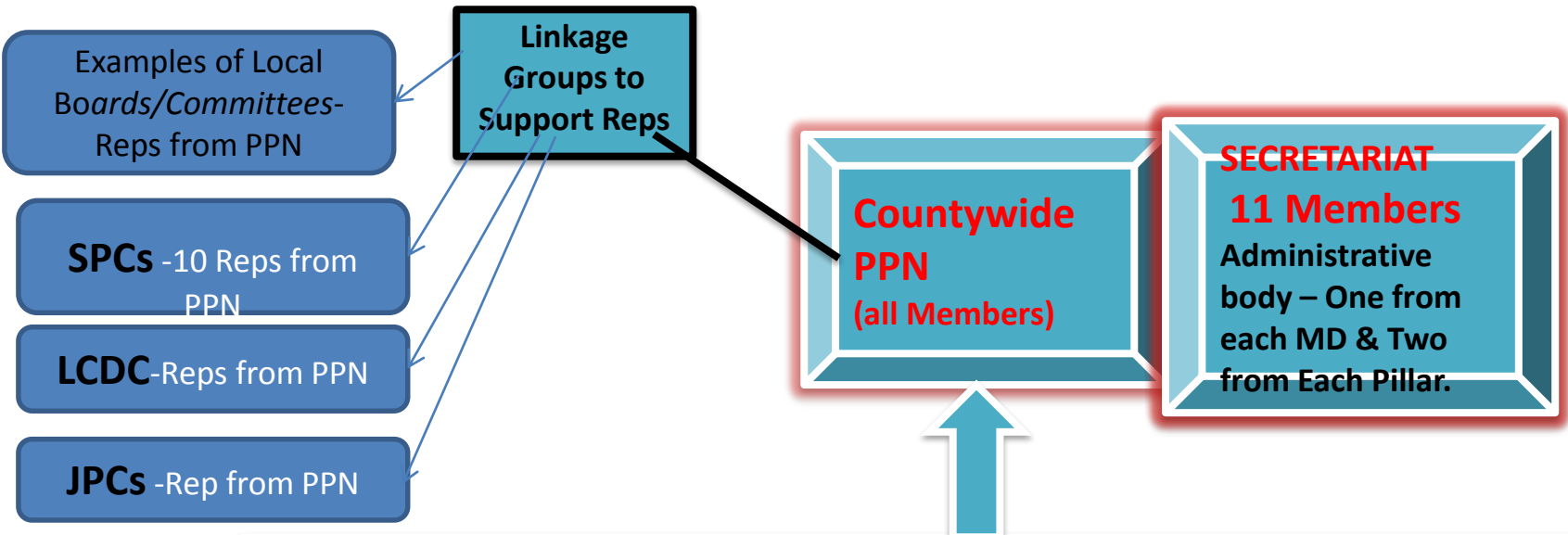
Meetings have taken place in the following Municipal Districts (MD).

MD	Venue	Date	Time
Celbridge/ Leixlip MD	Leixlip Library, Captains Hill, Leixlip	Wed 4 th May	Registration from 7.30pm. Meeting begins at 8pm
Maynooth MD	Maynooth Post Primary School, Moyglare Road	Wed 11 th May	
Naas MD	Pipers Hill School , Kilcullen Road, Naas	Thurs 12 th May	
Kildare/ Newbridge MD	Solas Bhríde, Tully Road Kildare Town	Tue 17 th May	
Athy MD	Athy Community College, Tomard, Athy	Thurs 19 th May	
County Wide	Toughers Restaurant, Naas	Wed 25 th May	

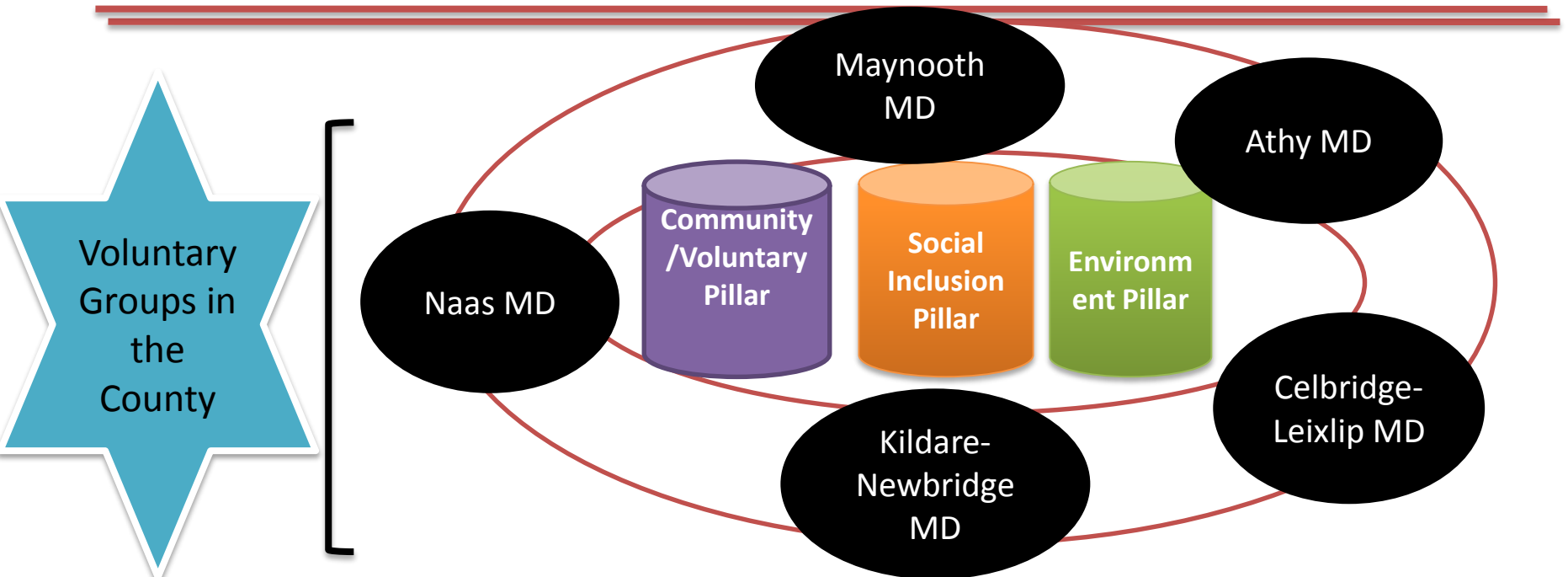
BREAKDOWN OF REGISTERED GROUPS

PPN Breakdown of Registered Groups 23rd May 2016

	Athy MD	Celbridge Leixlip MD	Kildare Newbridge MD	Maynooth MD	Naas MD	Totals
Community & Voluntary	52	53	88	107	68	368
Social Inclusion	13	13	26	9	20	81
Environmental	1	2	4	6	6	19
Totals	66	68	118	122	94	468



Registration of Groups to both County & Municipal District PPNs



◆ **PPN Secretariat will be made up of 11 representatives:**

- 1 representative from each Municipal District – **total of 5**
- 2 From each Sector/Pillar - **total of 6**
- 2 x Community & Voluntary
- 2 x Social Inclusion
- 2 x Environment

- The Secretariat will facilitate implementation of decisions of County Kildare Plenary

- Will ensure proper functioning of PPN and co-ordinate activities of PPN Secretariat